

Mar. 04, 2024

Added on July 01, 2026

GIKEN INDUSTRIAL CO., LTD.

Dear Customer;

**ANZM-15000/20000/28000 Production discontinuation information**

Thank you very much for your continued support.

Now, regarding the large nut runner series that has been used by customers until now,

Due to the discontinuation of production of the parts used (motor), as of April 15, 2024.

Production will be discontinued.

Our company has endeavored to produce by purchasing the parts we use in stock, but

We have come to the conclusion that future production will be difficult and have decided to discontinue production.

Thank you very much for your continued patronage.

1. Subject of this notice

ANZM-15000

ANZM-15000SFFT, ANZM-20000SFFT, ANZM-28000SFFT

2. Time of discontinued production

New order: Orders received until Apr.05, 2024

Repair: Orders received until Apr.05, 2024

3. Future actions (Added on July 01, 2026)

Development of the successor model has been completed, and we are pleased to announce it in the list below.

The successor model only features changes to the motor section.

Please refer to the supplementary document\_external view for dimensions.

| Discontinued model | Successor model | Compatible Controllers (GSK series) | Compatible Controllers (GSS series) |
|--------------------|-----------------|-------------------------------------|-------------------------------------|
| ANZM-15000         | ANZM-15001      | GSK-17-E1-N2                        | Not available                       |
| ANZM-15000SFFT     | ANZM-15001SFFT  | GSK-T7-E1-N2                        |                                     |
| ANZM-20000SFFT     | ANZM-20001SFFT  | GSK-17-E1-N7                        |                                     |
| ANZM-28000SFFT     | ANZM-28001SFFT  | GSK-T7-E1-N7                        |                                     |

If your controller is a GSK series, you can address this by changing the rated settings after replacing the nut runner.

Please use setting software version 0.0.124 or 7.0.56 or later.

The nut runner mounting pitch is the same. The controller and cable can be reused.

If you have any questions, please contact our sales or technical department.

If your controller is a GSS series, you will need to change it to a GSK series controller when replacing the nut runner.

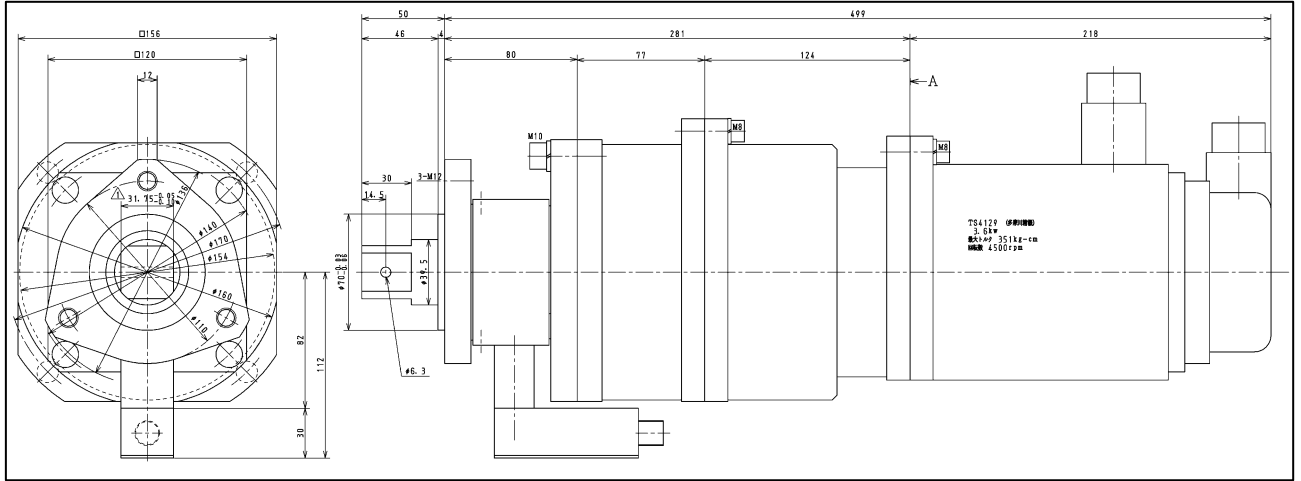
The nut runner mounting pitch is the same. The cables can be reused.

Please contact our sales department or technical department.

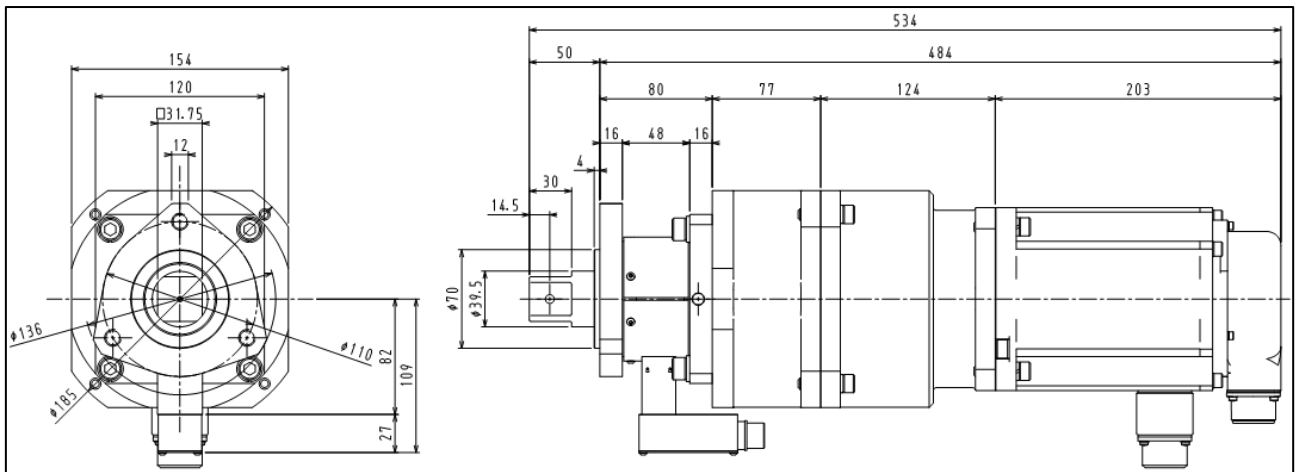
(Tel: +81-743-59-3730, Fax: +81-743-59-3733).

Outline drawing

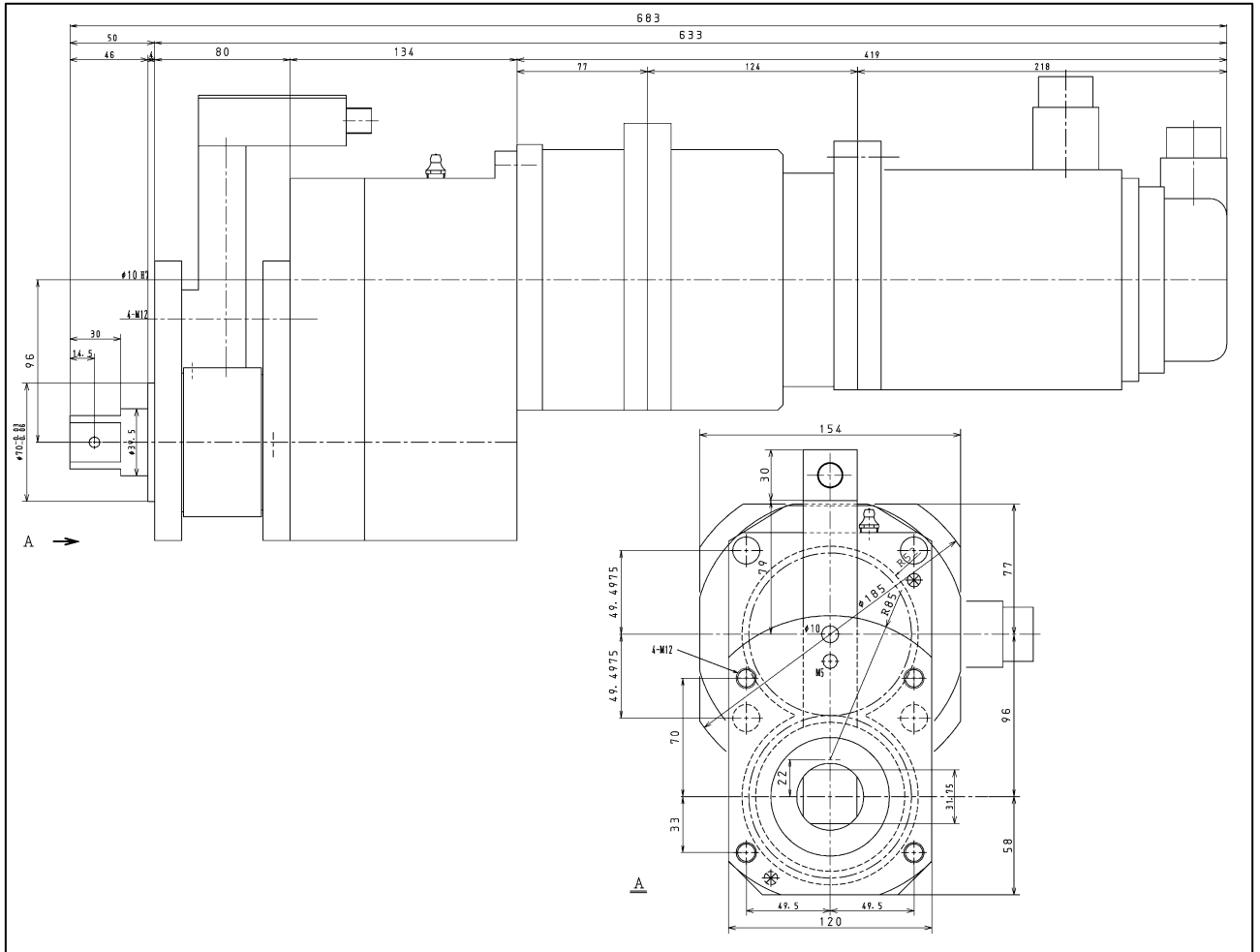
1 - 1. Discontinued model : ANZM-15000



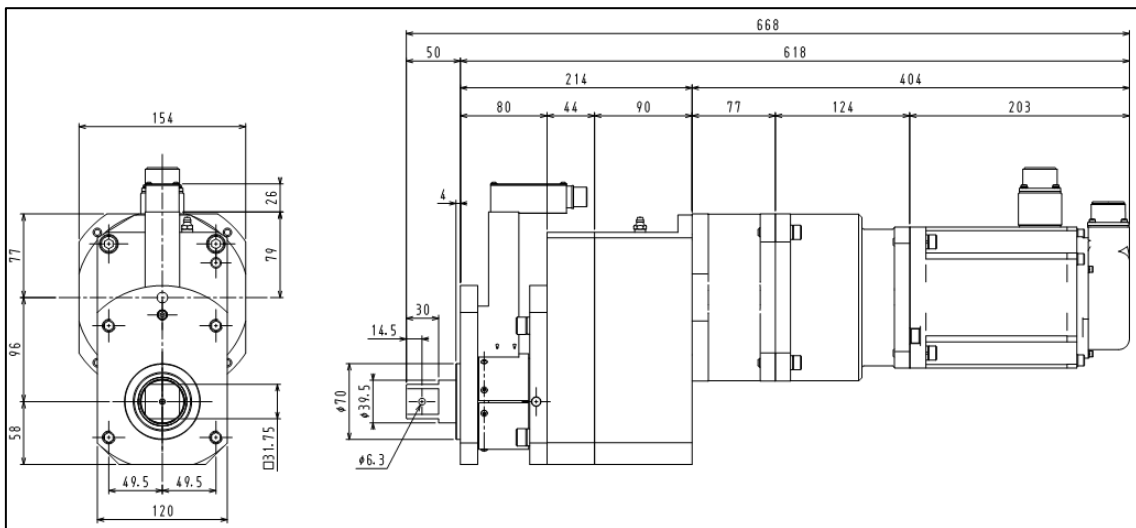
1 - 2. Successor model : ANZM-15001



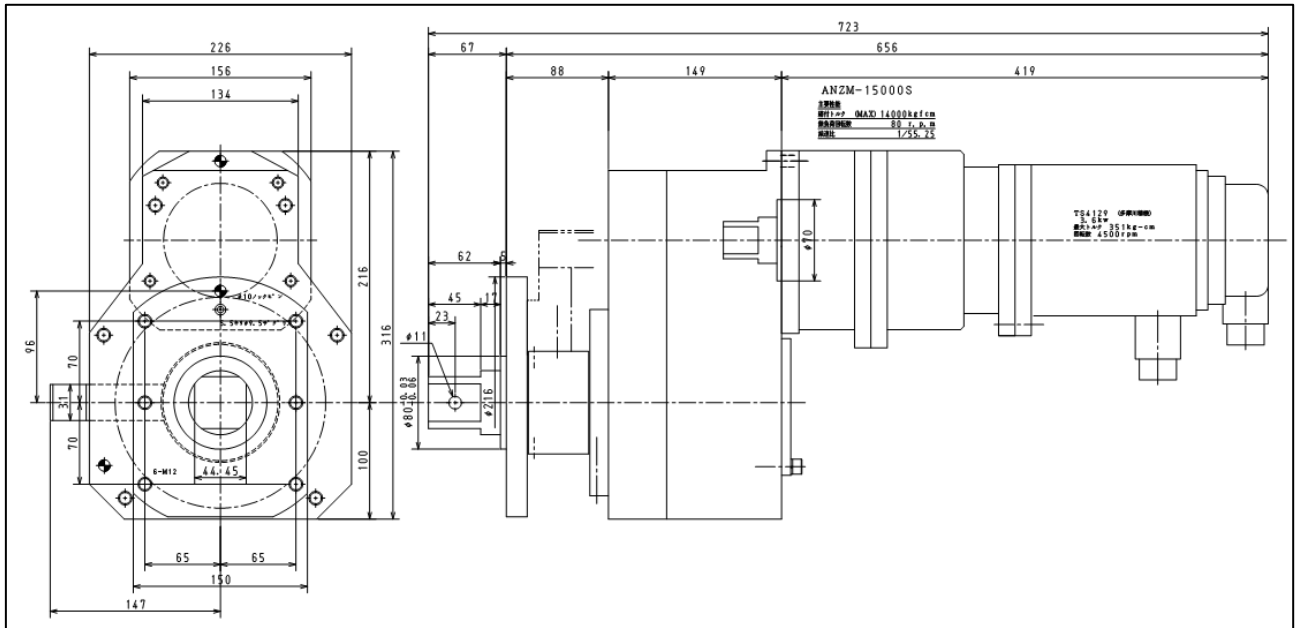
2 - 1. Discontinued model : ANZM-1500SFFT



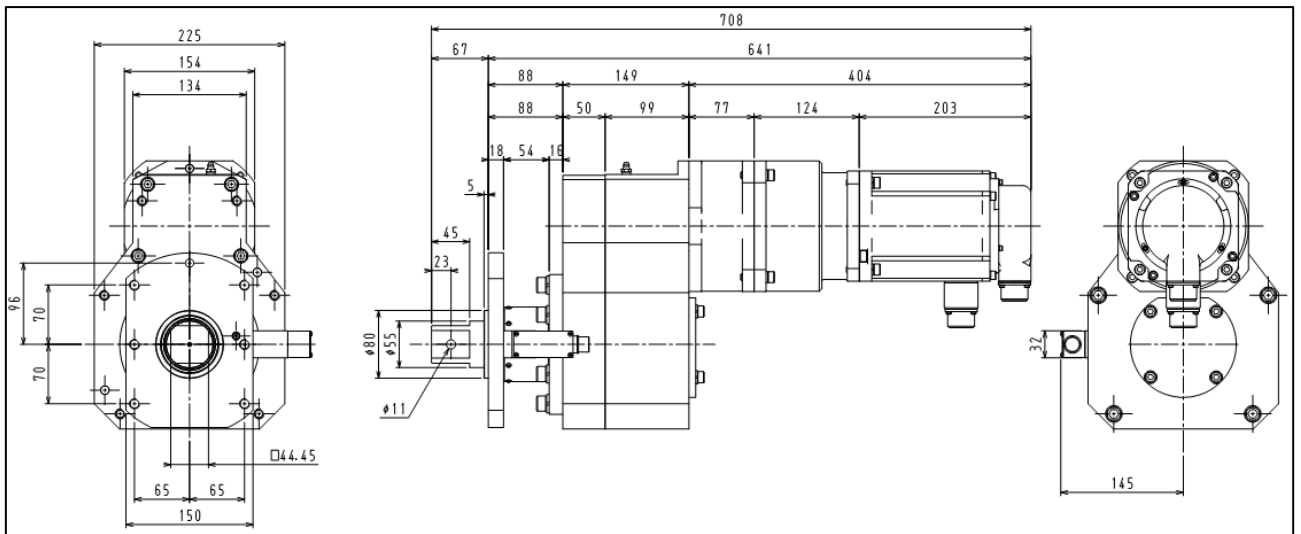
2 - 2. Successor model : ANZM-15001SFFT



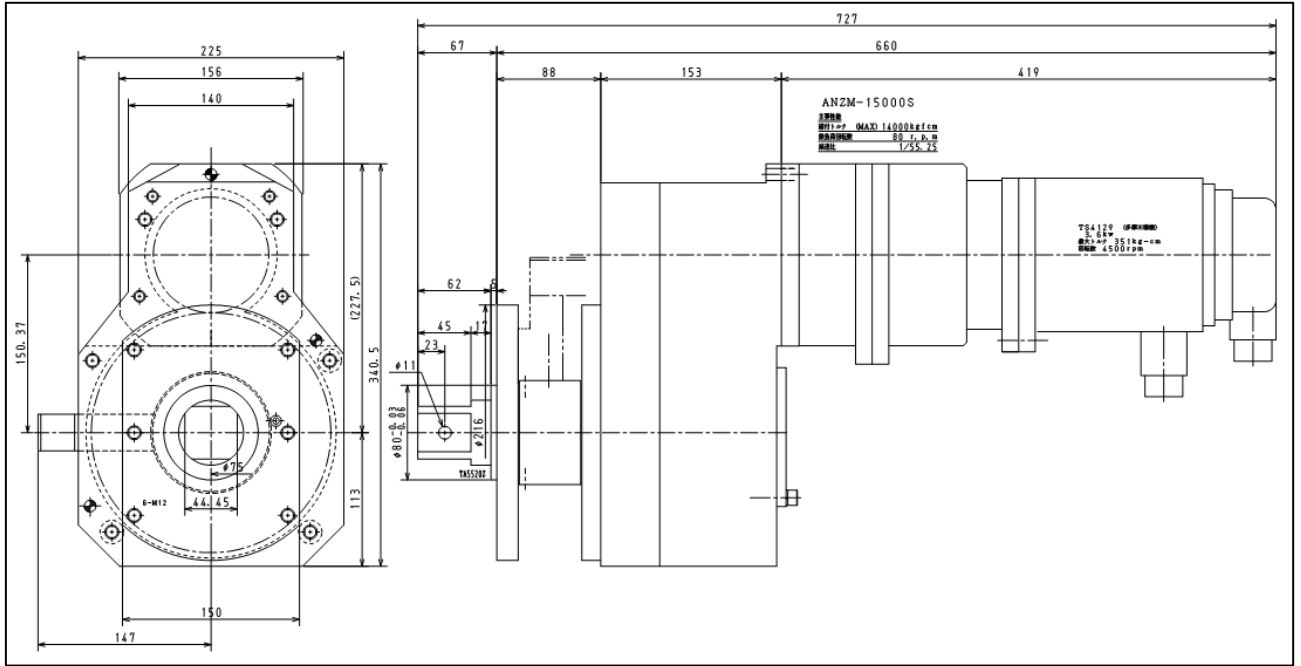
3 - 1. Discontinued model : ANZM-2000SFFT



3 - 2. Successor model : ANZM-20001SFFT



4 - 1. Discontinued model : ANZM-2800SFFT



4 - 2. Successor model : ANZM-28001SFFT

